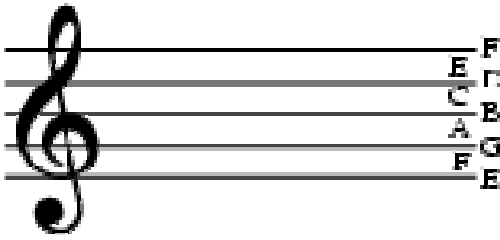
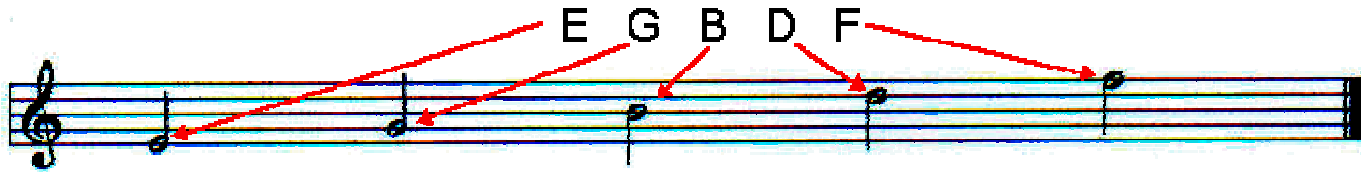


## Treble Clef, Bass Clef, and the Grand Staff

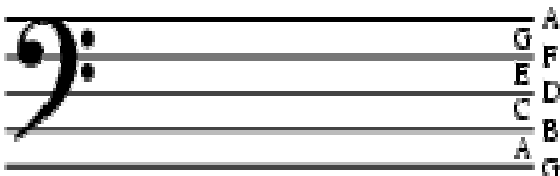
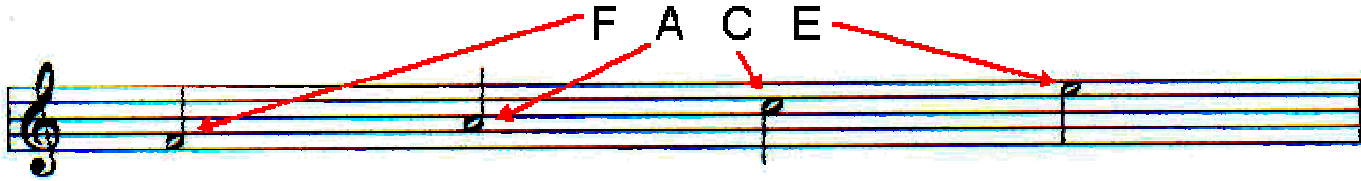


This is a treble clef. The staff with the high notes is called the **treble staff**. It has a **treble clef** at the beginning of the staff.

The names of the **lines** of the treble staff are **E, G, B, D, and F**. **Every Good Boy Does Fine** is an easy memory game to help you remember the names of the notes on these lines.

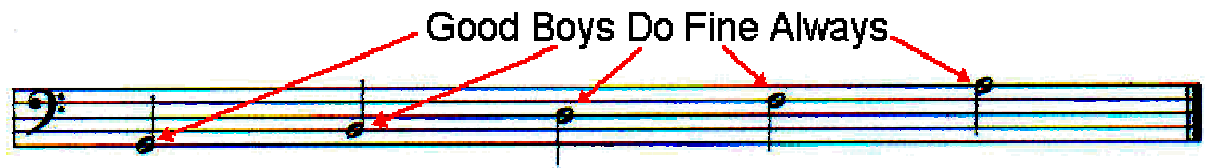


The names of the **spaces** of the treble staff are **F, A, C, and E**. That spells **FACE**.

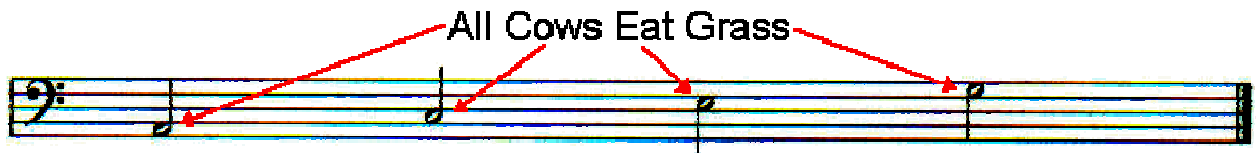


This is a bass clef. The staff with the low notes is called the **bass staff**. It has a **bass clef** at the beginning of the staff.

The names of the **lines** of the bass clef are **G, B, D, F, and A**. **Good Boys Do Fine Always** will help you remember these names.



The names of the spaces in the bass clef are A, C, E, and G. All Cows Eat Grass will help you remember these names.



Both staves together are called the **grand staff**. Piano players use the grand staff when they play music. The left hand plays the bass clef (low notes) and the right hand plays the treble clef (high notes).

